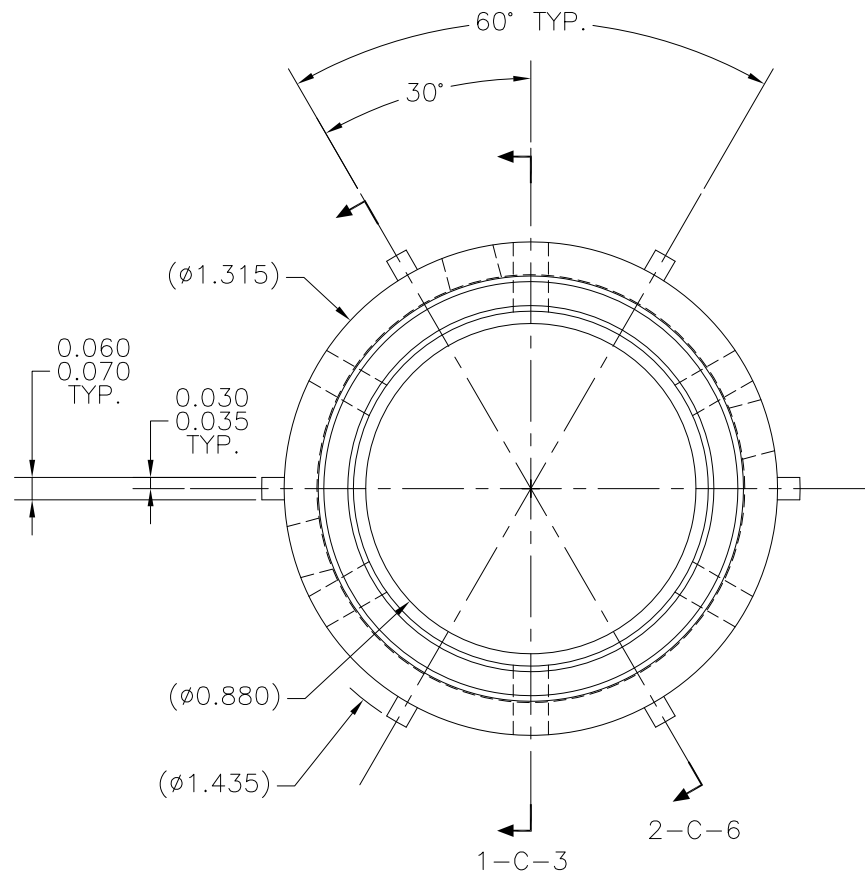


REVISIONS				
NO	DESCRIPTION	DATE	BY	APR/DATE
0	ISSUED FOR MANUFACTURE	2/21/11		
1	ADDED HOLE LOCATION, BORE FINISH AND NOTE 6	4/7/11		

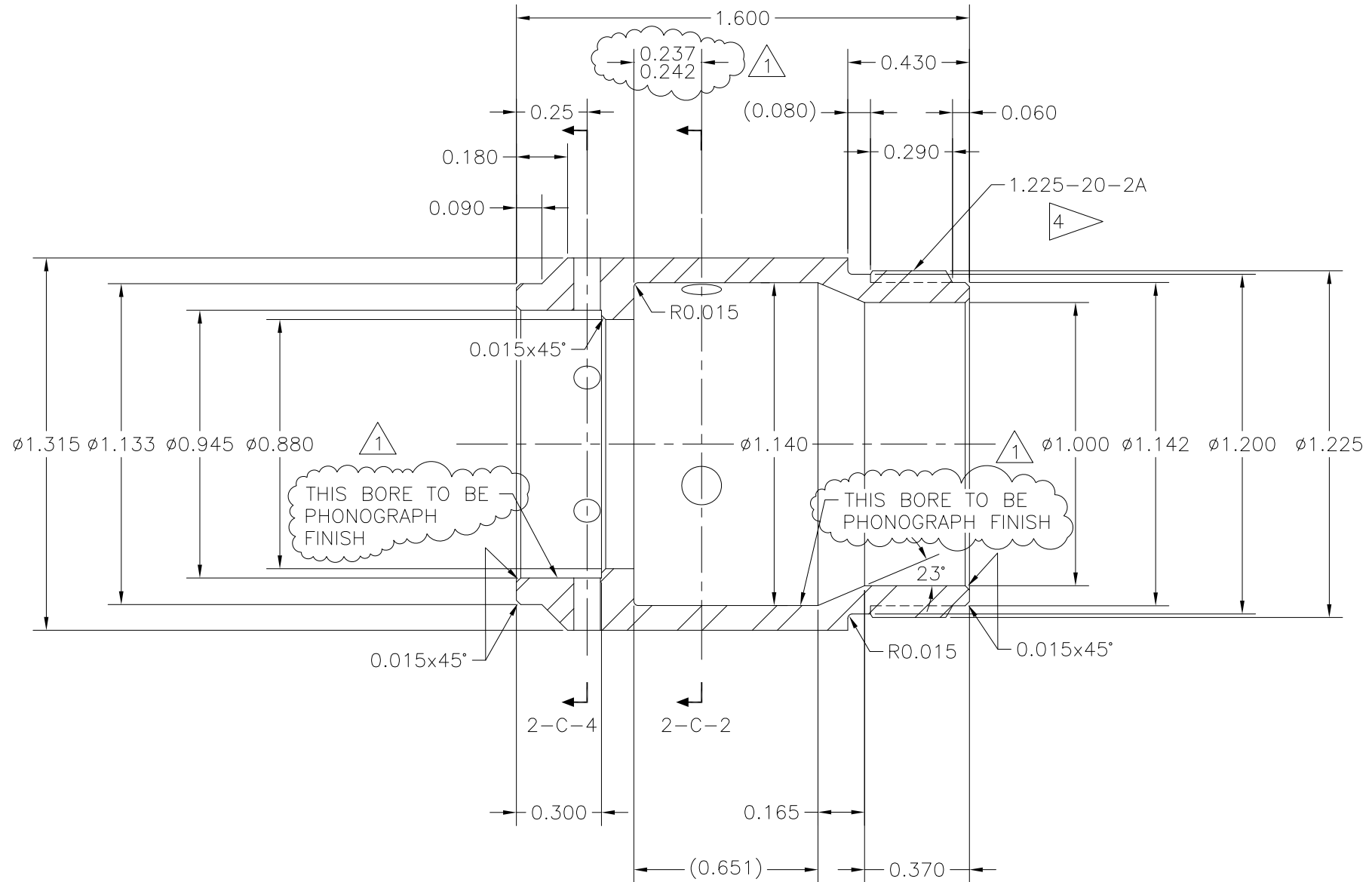
NOTES:

- MATERIAL: 316 OR 321 STAINLESS STEEL
- HEAT TREAT: NONE
- SURFACE TREATMENT: NONE
- 1.225-20-2A
60° V-THREAD
EXTERNAL CLASS 2A
MAJOR DIA. = 1.225/1.142
MATING PART IS FEMALE LOCKING SLEEVE, ERS-023.
ENSURE THAT MATING THREADS MAKE UP SMOOTHLY
USING MATING PART AS "THREAD GAGE".
- WEIGHT: 0.18 LBS.

6. AFTER MACHINING, THOROUGHLY DEGREASE, MASK THREADS, AND SAND BLAST ALL SURFACES, EXCEPT THREADS, TO ACHIEVE ROUGH FINISH FOR EPOXY BONDING. SEAL FINISHED PART IN PLASTIC OR ZIP LOCK BAG TO AVOID OIL OR GREASE CONTAMINATION DURING HANDLING AND DELIVERY.



END VIEW 1-C-7
MALE LOCKING SLEEVE



SECTION 1-C-3
REF. 1-B-7

TOLERANCES: UNLESS OTHERWISE SPECIFIED 0.X ± 0.030 0.XX ± 0.010 0.XXX ± 0.005 ANGLES ± 1/2° BREAK EDGES 0.015 x 45° MIN. FINISH 125 ✓ [0.010]A ALL DIMS ARE IN INCHES, UNLESS NOTED OTHERWISE.	PROPRIETARY NOTICE THIS DRAWING AND THE INFORMATION IT CONTAINS ARE CONSIDERED CONFIDENTIAL, AND MAY NOT BE REPRODUCED, COPIED OR USED, IN PART OR IN WHOLE, WITHOUT PRIOR WRITTEN CONSENT.	Integrated Ocean Drilling Program TEXAS A&M UNIVERSITY 1000 DISCOVERY DRIVE COLLEGE STATION, TX 77845	
		SHEET 1 OF 2 SCALE 4:1 BY MM DATE 2/21/11	TITLE MALE LOCKING SLEEVE SYSTEM ERS v.2 APPROVED DH CHECKED DH